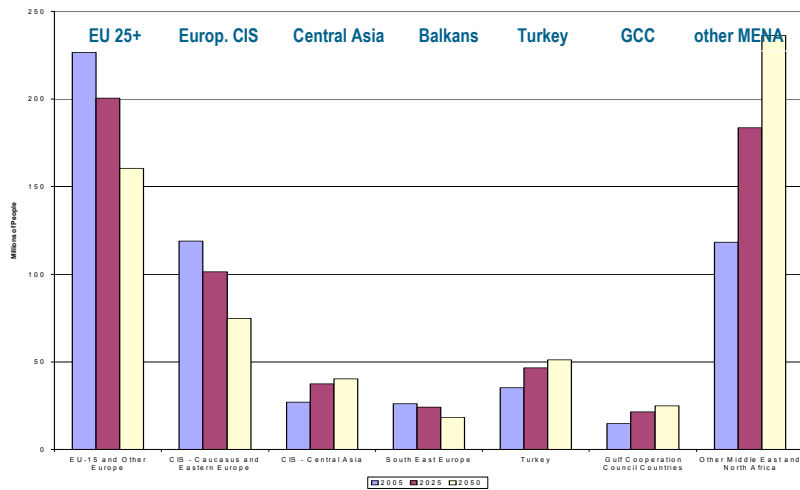
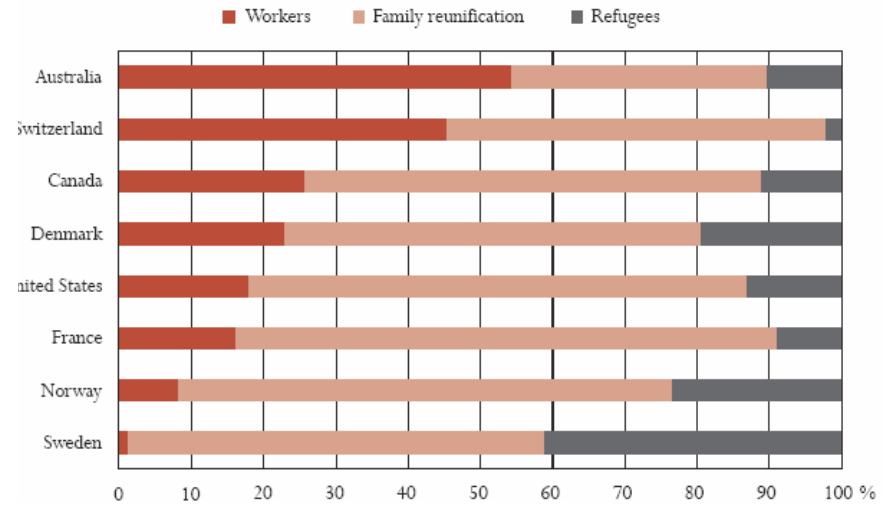


Total Labour Force, Zero Migration. (Muenz, 2006)

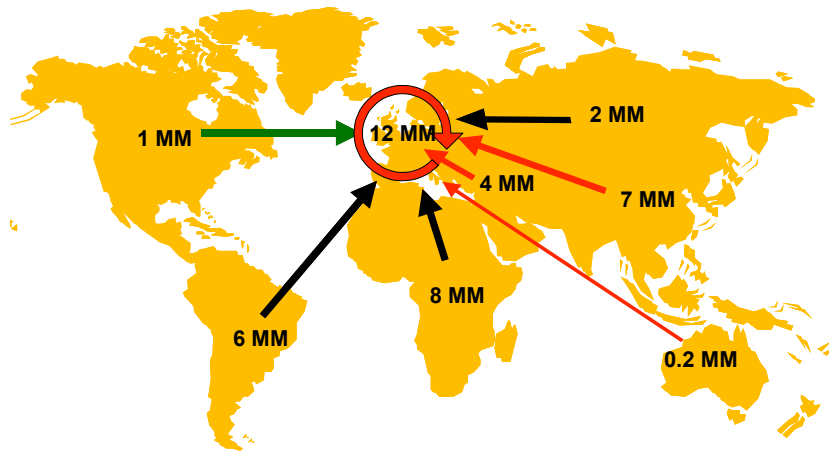


Source: Holzmann, Muenz 2005, World Bank, ILO, UN

Total Migrant Inflows by Nation/Category



Migration from ROW



Solow



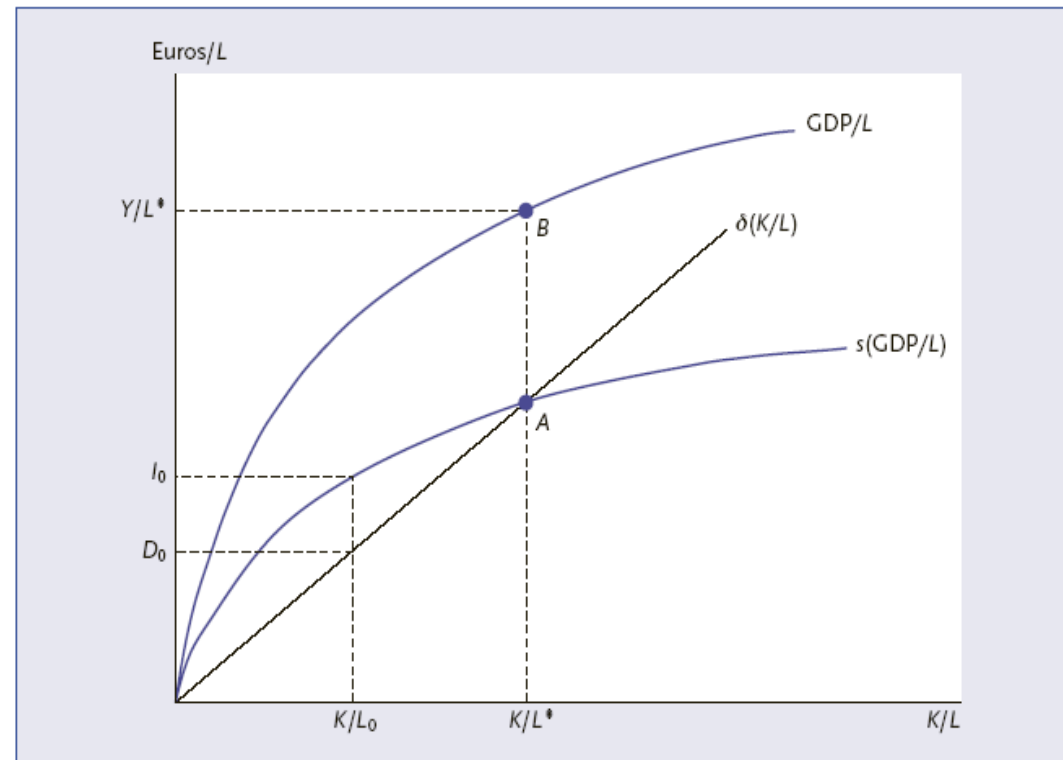
Migration Patterns in EU

Net Migration	Absolute Terms	Rel. to Pop Size/1000	%
Spain	+650,000	Cyprus	+27.2
Italy	+340,000	Ireland	+11.4
UK	+200,000	Austria	+7.4
France	+100,000	Italy	+5.8
Germany	+100,000	USA	+5.1
Austria	+60,000	EU25	+4.4
EU 25	+1,700,000		

European Growth Phases, 1890-1992

Period	Real GDP	Real GDP/ Capita	Real GDP/ Hour
1890-1913	2.6	1.7	1.6
1913-1950	1.4	1.0	1.9
1950-73	4.6	3.8	4.7
1973-1992	2.0	1.7	2.7
Whole Period 1890-11991	2.5	1.9	2.6

Basic Solow Model



Terminology

- Y:** Output
- L:** Labour Force
- GDP:** Gross Domestic Product
- Delta:** Depreciation
- s:** Savings share
- K:** Capital Stock
- K*/L*:** Optimal Capital/Labour Ratio